



Sinus Lift Kit

Article description

Order quantity

41.846.00 Sinus Lift Kit acc. to Prof. Palti consisting of:	[]
85.185.12 Washtray with lid	[]
41.846.50 Sinus Curette acc. to Palti, double-ended, 4.5/4.5 mm, blunt, ZEPP -Line, matt surface	[]
41.846.60 Sinus Curette acc. to Palti, double-ended, 3.5/3.5 mm, blunt, ZEPP -Line, matt surface	[]
41.846.70 Sinus Curette acc. to Palti, double-ended, 3.0/3.0 mm, blunt, ZEPP -Line, matt surface	[]
41.846.80 Sinus Curette acc. to Palti, double-ended, 5.0/5.0 mm, blunt, ZEPP -Line, matt surface	[]
19.714.21 Augmentation Material Applicator, bucket, single-ended	[]
41.868.08M Micro Sinus Plugger, blue titanium handle, ZEPP -Line, double-ended, 17.5 cm, plugger Ø 3.5 mm and Ø 2.6 mm	[]
85.251.00 Mixing Cup, stainless steel, with POM lid, Ø 4 cm (kit consists of 2 pieces)	[]
19.651.15M Surgical Aspiration, Sinusline, titanium tip Ø 1,5 x 15 mm, Ø 5 mm, 17,5 cm	[]
08.904.023F Diamond Bur, round, for right angle, Ø 2,3 mm, length = 22 mm, red (fine)	[]
08.904.023G Diamond Bur, round, for right angle, Ø 2,3 mm, length = 22 mm, green (coarse)	[]
08.904.023HF Tungsten Carbide Bur (C141), round, Ø 2,3 mm, length = 22 mm, for right angle	[]



Distributed by:

Produced by:



HELMUT ZEPF
MEDIZINTECHNIK GMBH

in cooperation with Excellent Centre



videnti

78606 Seitingen-Oberflacht, Germany | Tel.: +49 (0) 74 64 / 98 88 -0 | Fax: +49 (0) 74 64 / 98 88 -88
E-Mail: info@zempf-dental.com | Internet: www.zempf-dental.com



PI
SERIES



HELMUT ZEPF
MEDIZINTECHNIK GMBH
www.zempf-dental.com

Prof. Palti

P
SERIES

41.300.00
Complete Sinus Lift Kit
acc. to **Prof. Palti**

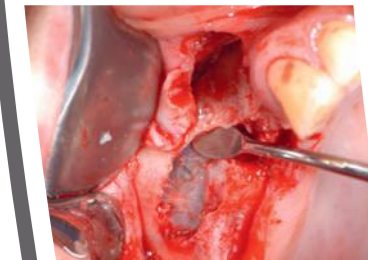
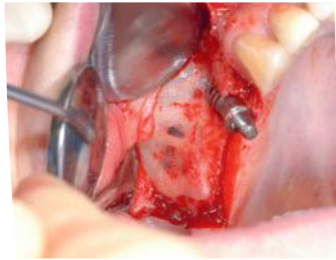


19.714.21
Augmentation Applicator, scoop, single-ended



Sinus Lift Kit

Application



41.868.08M Micro Sinus Plugger, blue titanium handle, ZEPF-Line, double-ended, 17.5 cm, plugger Ø 3.5 mm and Ø 2.6 mm

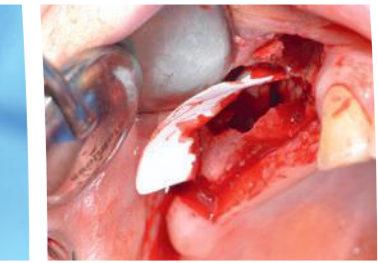
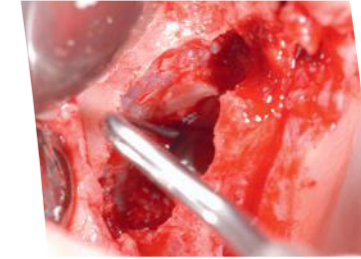
41.846.80 Sinus Curette acc. to Palti, double-ended, 5.0/5.0 mm, blunt, ZEPF-Line, matt surface

41.846.70 Sinus Curette acc. to Palti, double-ended, 3.0/3.0 mm, blunt, ZEPF-Line, matt surface

41.846.60 Sinus Curette acc. to Palti, double-ended, 3.5/3.5 mm, blunt, ZEPF-Line, matt surface

41.846.50 Sinus Curette acc. to Palti, double-ended, 4.5/4.5 mm, blunt, ZEPF-Line, matt surface

Application



08.904.023F Diamond Bur, round, for right angle, Ø 2.3 mm, length = 22 mm, red (fine)



08.904.023G Diamond Bur, round, for right angle, Ø 2.3 mm, length = 22 mm, green (coarse)



08.904.023HF Tungsten Carbide Bur (C141), for right angle, Ø 2.3 mm, length = 22 mm, round

19.651.15M Surgical Aspiration, Sinusline, titanium tip, Ø 1.5 x 15 mm, acc. to Dr. Maty, tip mod. acc. to Dr. Shakibaie-M., 17.5 cm



85.251.00 Mixing Cup, stainless steel, with POM lid Ø 4 cm (kit consists of 2 pieces)



HELMUT ZEPF
MEDIZINTECHNIK GMBH

Tel.: +49 (0) 74 64/98 88 - 0



HELMUT ZEPF
MEDIZINTECHNIK GMBH

www.zepf-dental.com