








New Osteotome Kit

Article description	Order quantity	
47.937.00 New Osteotome Kit acc. to Prof. Palti consisting of:	[]	
85.182.50 1/3 Washtray System	[]	
47.937.01 Tray for New Osteotome Kit	[]	
47.937.10 Screw-Osteotome Insert acc. to Palti, RA-Hex connection with shock absorption, Ø shaft 2.7 mm, Ø tip 2 mm	[]	
47.937.11 Screw-Osteotome Insert acc. to Palti, RA-Hex connection with shock absorption, Ø shaft 3.2 mm, Ø tip 2.7 mm	[]	
47.937.12 New Osteotome Insert acc. to Palti, RA-Hex connection with shock absorption, Ø shaft 3.7 mm, Ø tip 3.2 mm, graduation 7/10/13/15/18/20 mm	[]	
47.937.13 New Osteotome Insert acc. to Palti, RA-Hex connection with shock absorption, Ø shaft 4.2 mm, Ø tip 3.7 mm, graduation 7/10/13/15/18/20 mm	[]	
47.937.14 New Osteotome Insert acc. to Palti, RA-Hex connection with shock absorption, Ø shaft 5 mm, Ø tip 4.2 mm, graduation 7/10/13/15/18/20 mm	[]	
47.502.10 Screwdriver Handle with extension, RA-Hex connection with shock absorption, for screwing and hammering application	[]	

Distributed by:

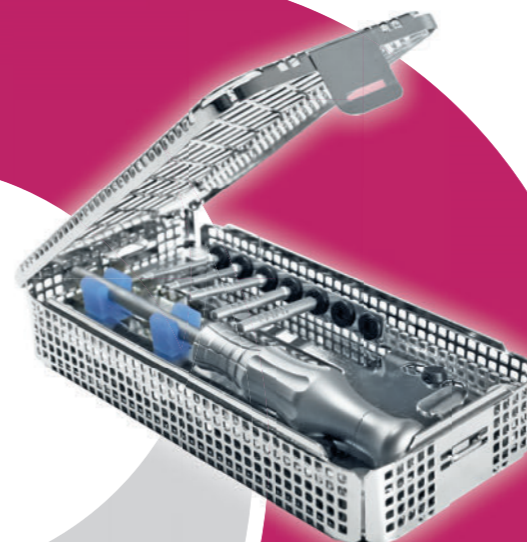
Produced by:



in cooperation with Excellent Centre



78606 Seitingen-Oberflacht, Germany | Tel.: +49 (0) 74 64 / 98 88 -0 | Fax: +49 (0) 74 64 / 98 88 -88
E-Mail: info@zempf-dental.com | Internet: www.zempf-dental.com



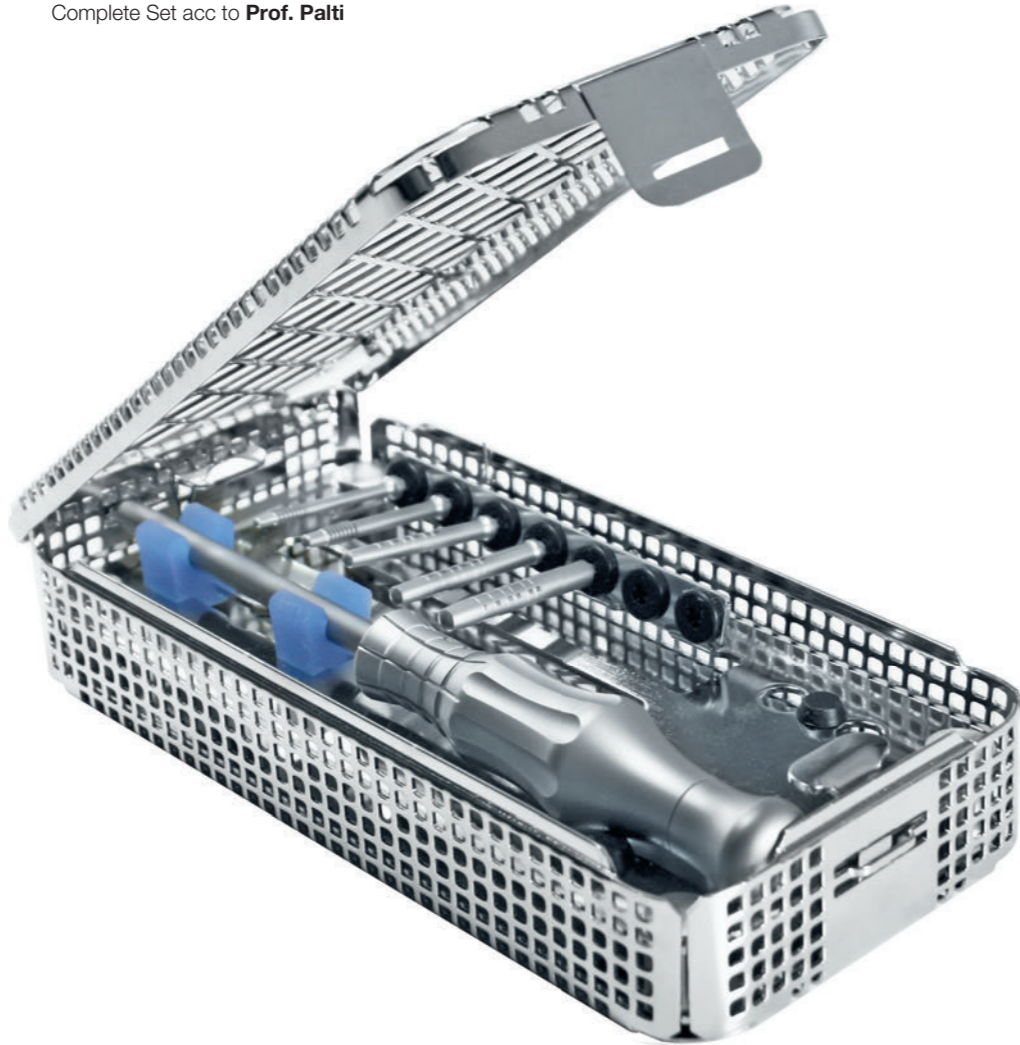
New Osteotome Kit

Application

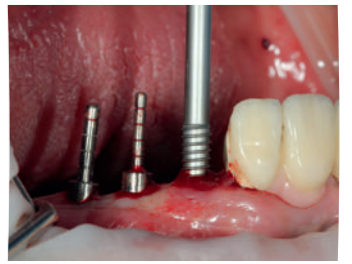
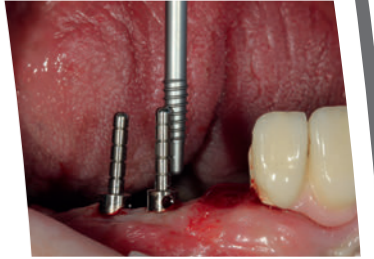


New Osteotom Kit

47.937.00
Complete Set acc to Prof. Palti



Application



Screw-Osteotome Inserts acc. to Palti

RA-Hex connection with shock absorption



47.937.10
Ø shaft 2.7 mm, Ø tip 2 mm



47.937.11
Ø shaft 3.2 mm, Ø tip 2.7 mm

New Osteotome Inserts acc. to Palti

RA-Hex connection with shock absorption, graduation 7/10/13/15/18/20 mm



47.937.12
Ø shaft 3.7 mm, Ø tip 3.2 mm



47.937.13
Ø shaft 4.2 mm, Ø tip 3.7 mm



47.937.14
Ø shaft 5 mm, Ø tip 4.2 mm



47.502.10

Screwdriver Handle with extension,
RA-Hex connection with shock absorption,
for screwing and hammering application